



Portland Fields, Sutton In Ashfield, NG17

£1,295 PCM

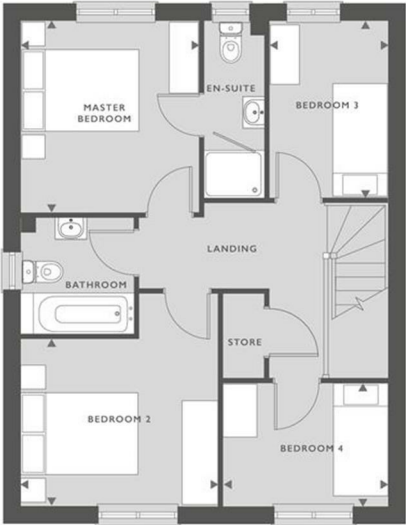
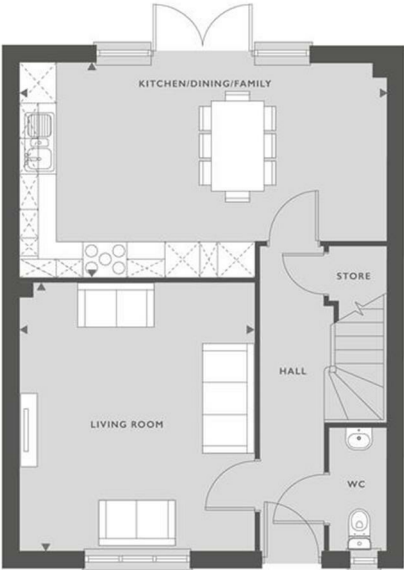
We proudly offer a beautiful collection of 2 to 4 bedroom homes in the market town of Sutton in Ashfield. With an abundance of local amenities, schools for all ages and great transport links, Portland Field is the ideal spot for those searching for a tranquil retreat with all the conveniences of modern living right on the doorstep.

Deposit: £1495
Council Tax Band TBA
Unfurnished
Available Now



23 Butterworth Road,, Sutton-In-Ashfield, NG17 1DL

1062 SQFT
98 M²



GROUND FLOOR

KITCHEN/DINING/FAMILY	6.21M X 3.59M	20'3" X 11'7"
LIVING ROOM	5.33M X 3.97M	17'4" X 13'

FIRST FLOOR

MASTER BEDROOM	3.24M X 2.99M	10'6" X 9'8"
BEDROOM 2	3.32M X 2.83M	10'8" X 9'2"
BEDROOM 3	2.99M X 1.99M	9'8" X 6'5"
BEDROOM 4	2.78M X 2.08M	9'1" X 6'8"

■ SVP

